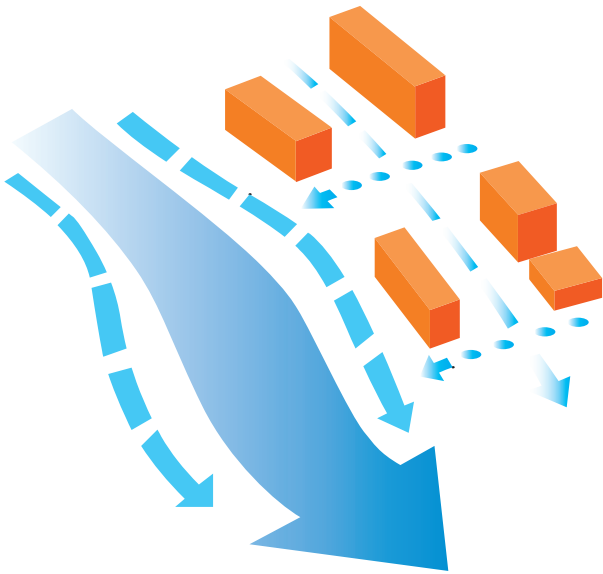




Middle Catchment > Let rivers flow



Within the middle catchment of a river, the land is typically less steep than upstream and the rainwater catchment area far greater. Rainwater takes longer to reach the river at this point, but when combined with rainfall collected from across the catchment, it can result in large volumes of water that may remain on land for days following a flood.

Flood volumes are too large to consider storing on site and it is far more important to allow floodwater to pass through the site to avoid causing flooding upstream. Topographical level variations within the development site can help to take standing water away from buildings.

