

## Chrysalide, Eco friendly dwelling



**Entry Title:** " Chrysalide, Eco friendly dwelling"

**Company:** Fritsch-Durisotti, France

**Category:** Professional, Concept

**Designers:** Antoine Fritsch & Vivien Durisotti

### Entry Description:

Chrysalide emerged from a simple idea: nature only knows curves, it is the starting point of this entirely eco-designed dwelling meant to be in harmony with its environment. Its conception fits in a global approach to respect nature.

We believe that a vast majority of people throughout the world share these preoccupations, and therefore included them in our reflection from the very beginning with the objective to make this dwelling accessible to all.

It is built on a 100% wooden framework and it is manufactured in a plant in order to restrict resulting ecological impacts and reduce costs.

It sits on four stilts to limit the ground impact of the site it is installed on.

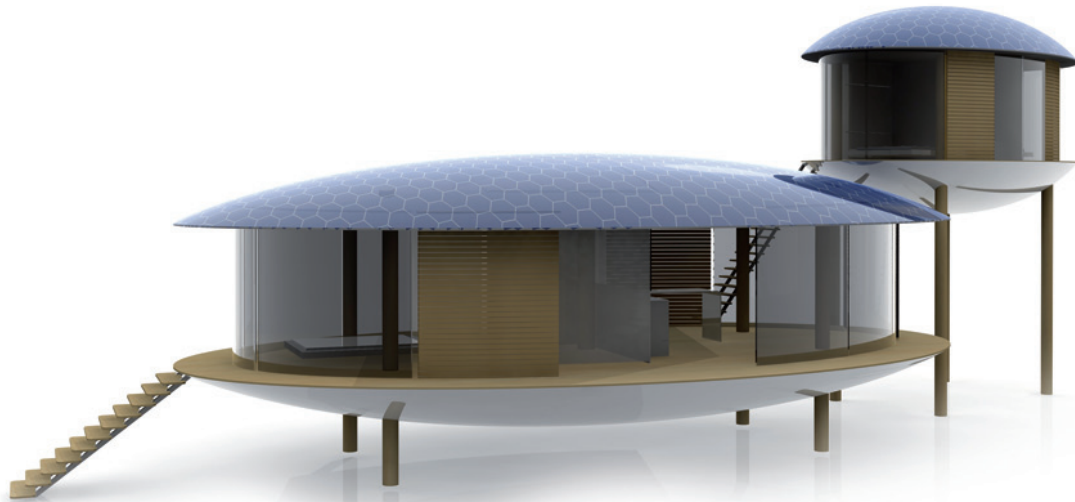
---

**fritsch + durisotti**

Design: [fritsch-durisotti.com](http://fritsch-durisotti.com) - 7,quai des Martyrs de la résistance - 78700 Conflans Ste Honorine - FRANCE  
Phone: +33 (0)1 39 19 42 06 - Fax: 01 39 19 46 59 - Mail: [af@fritsch-durisotti.com](mailto:af@fritsch-durisotti.com)

## Modularity

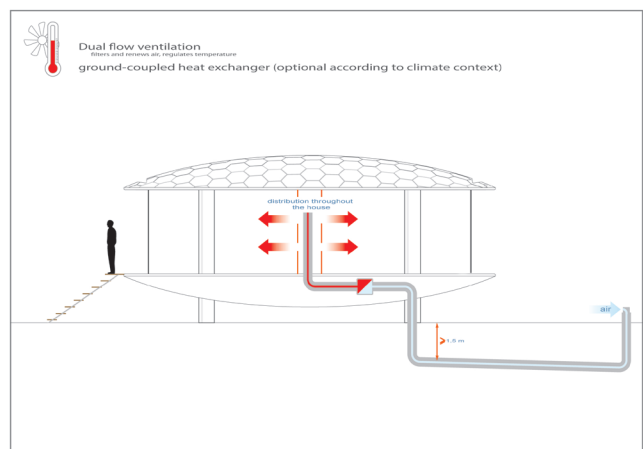
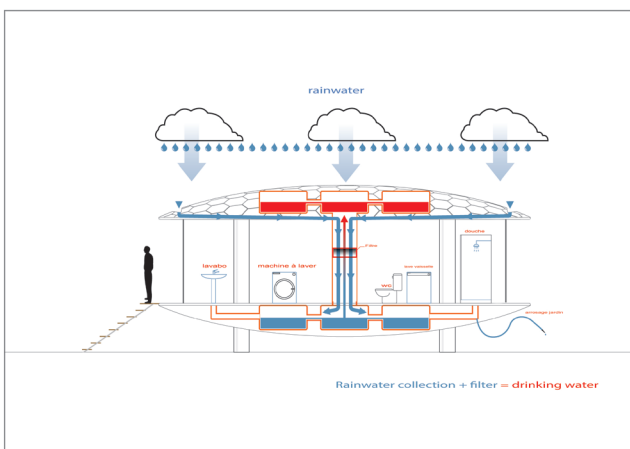
The interior has been designed as an open space that can be tailored to suit individual needs, and several units can be linked together should more space be required.



## Interior

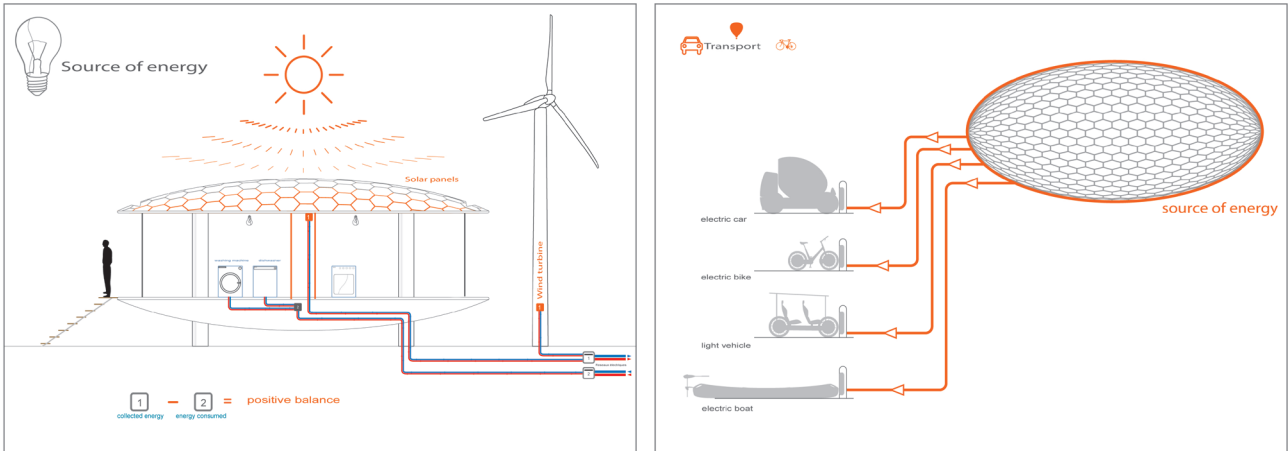
### Technical details:

Rainwater is collected and filtered. Thermal sensors can then heat it. Within the possible options, a ground-coupled heat exchanger system combined with dual flow ventilation enables temperature regulation and air renewal with little calorie loss. This system also allows for air-conditioning with minimal energy costs.



**Technical details:**

Electricity is generated by photovoltaic sensors coupled with a wind turbine, and allows the electricity supply of the dwellers' means of transportation (electric bike, small electric vehicle...)





## Architectural principle

Using the latest digital technologies, all the parts are made up to the finest details by computer numeric control machines prior to on-site assembly.

In order to minimise transportation costs, two forty foot containers hold the set of parts to be assembled by a specialised team in a few days.

two 40' HC containers = 1 Chrysalide module

Solar panel - Wooden structure - Ceiling - Wooden floor - Wooden structure - «Twintex» body - Concrete/Stone stilt

Floor area: 60 m<sup>2</sup>



---

**fritsch + durisotti**

Design: [fritsch-durisotti.com](http://fritsch-durisotti.com) - 7, quai des Martyrs de la résistance - 78700 Conflans Ste Honorine - FRANCE  
Phone: +33 (0)1 39 19 42 06 - Fax: 01 39 19 46 59 - Mail: [af@fritsch-durisotti.com](mailto:af@fritsch-durisotti.com)