

# ***KJELLGREN KAMINSKY ARCHITECTURE AB***

Sweden, 411 32 Göteborg, Ekmansgatan 3, +46 031 - 761 20 01

Fredrik Kjellgren // fredrik@kjellgrenkaminsky.se

Joakim Kaminsky // joakim@kjellgrenkaminsky.se



Kjellgren Kaminsky Architecture is an award winning architecture studio based in Göteborg, Sweden. It was founded in 2006 by its two principle architects, Fredrik Kjellgren and Joakim Kaminsky. KKA works with architecture across its broadest range of disciplines; from furniture to city planning, from theory to practice. The studio uses a "people, needs, context" approach to architecture and aims to create poetic outcomes with a strong grounding in functional and sustainable principles.

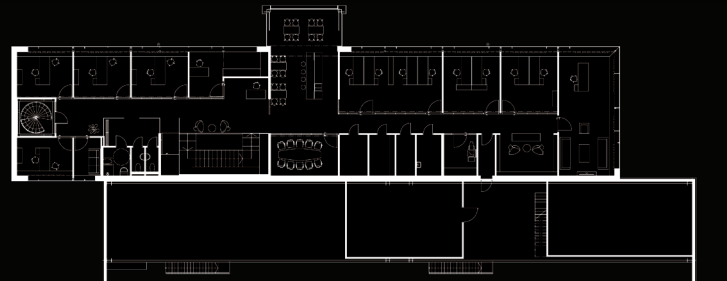
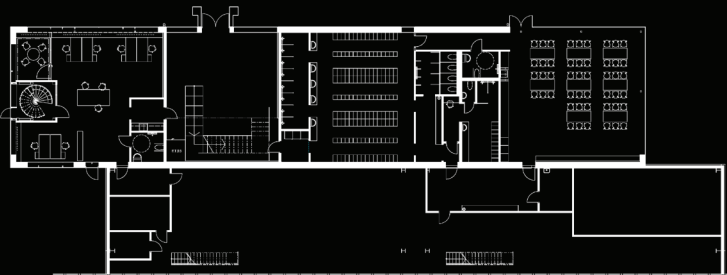
## ***LECOR FACTORY BUILDING***

Emphasizing the factory function of steel production



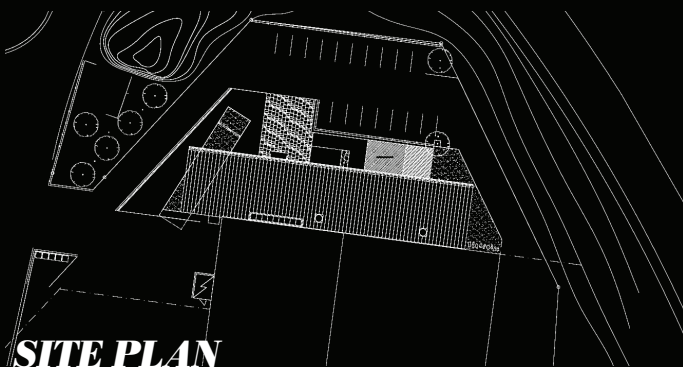


## PLAN VIEW



Project: Lecor  
 Client: Lecor  
 Type: Industrial / New office  
 Size: 1100 m<sup>2</sup>  
 Year: 2011  
 Location: Kungälv, Sweden

Team:  
 Fredrik Kjellgren, Joakim Kaminsky, Johan Brandström, Yvonne Lohmann, Pamela Paredes, Jochim Haag, Alexandra Agapie, Margherita Castellani, Josefina Högberg



## SITE PLAN

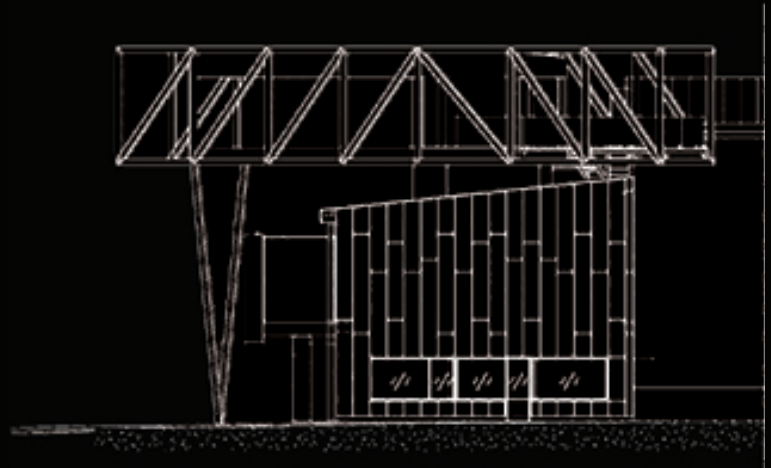
AIM

We have designed a new office building for the steel manufacturer Lecor. The building is situated in Kungälv, 10 kilometers north of Gothenburg. Lecor manufacture advanced steel constructions and wanted to showcase their skills in their own building. This intention in combination with the opportunity to create a landmark building visible from the nearby highway, was the starting point of our design process.



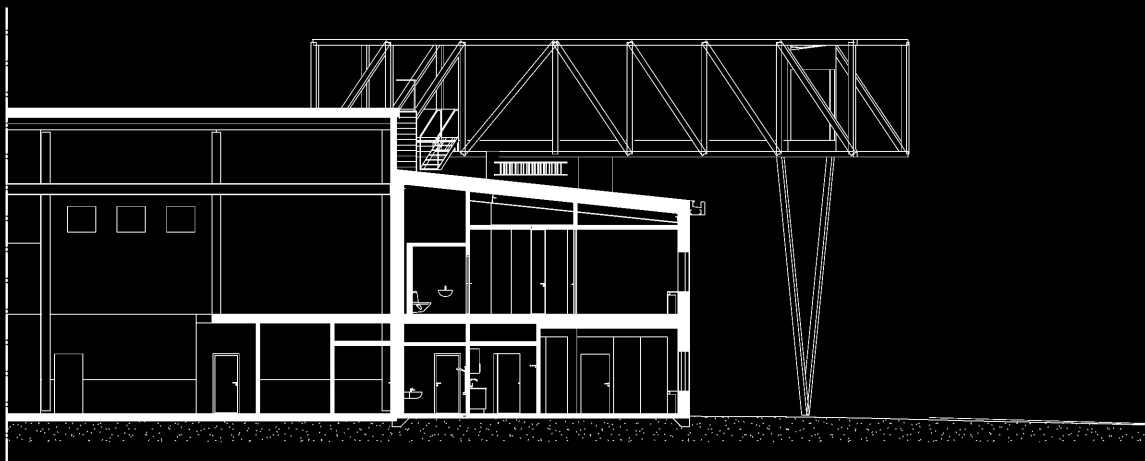
## ***DESIGN HIGHLIGHT***

On top, across the building, we further highlight and advertise the factory's steel operations by placing a conference room and an outdoor terrace enclosed in a long bridge of truss plant-steel construction. The lattice frame is metallic silver and the contained conference bridge is pastel green with large glass partitions along three of its sides.



***SECTION***

***FACADE***





## ***INSIDE***

Inside, the first floor of the building is divided into four main parts each with their own emphasised elements. The dining room at one end has the forest view, then there's the change-rooms, the main entrance with a spectacular steel staircase and the office area with a stairwell of glass and steel as well as yellow polished steel "short cut" spiral staircase.



## ***SUSTAINABLE MATERIALS***

We have worked with materials, colors and textures in various ways that can be associated with the steel industry and its traditions. The color pallet consists mostly of soft pastels and whites. We have adopted the principle of "draping" each room in a single colour.

