

DanSign Systems

About DanSign

Established in 1982, DanSign a manufacture of high-end architectural sign systems, has become a world-wide recognized leader in the signage and architectural industry. Over the years, DanSign has transformed itself from a family owned startup company to now a highly sought industry leader of a patented modular signage system. Our innovative approach to product development has become our niche in the signage industry and will continue to for years to come.

DanSign currently offers architectural signs and digital signage solutions while in tandem providing wayfinding and management of brand communication and information solutions. DanSign world headquarters is located in Copenhagen, Denmark with US office in Wisconsin.

The key to DanSign's success has been an uncompromising focus on high quality innovative design along with brilliant sustainable solutions. We at DanSign pride ourselves in offering state-of-the-art, trusted solutions and as one of the industry's leading architectural signage integrators. The values within our organization and ourselves include integrity, responsibility, creativity, and appreciation.



DanSign has recognized the importance of “green” initiatives and how we approach projects. Although we recognize some projects may request a low priced signage system, DanSign encourages an opposite offering to easily throwaway signage systems. The result of our efforts in embracing our beliefs in

renewable design while also providing value, DanSign rolled out a new sign system called PlanSign. The whole idea behind PlanSign was to create a modular sign system so flexible that once installed it could be managed on site and reused again and again. The flexibility and ease of maintenance of PlanSign is truly unique, including our patented locking mechanism.

We are very proud that PlanSign is now the world's first Cradle to cradle certified sign system. With great pleasure we have committed ourselves to continuous improvements and product optimization.

DanSign looks forward to contributing on making buildings across the globe more sustainable.

In close cooperation, PlanSign was designed and developed with design manager Henning Solfeldt of PLH Architects.

Contact details:

DanSign, Inc.
3272 Emmertsen Rd
Racine, WI. 53406

Tonny Soenderbaek, Sales and Marketing Director
ts@dansign.com
+45 4484 0330



PlanSign A Modular Sign System

Facts about PlanSign

A complete modular sign system in cool Danish design and sturdy material with a unique lock system.

DanSign is excited to introduce the modular system PlanSign, as the world first [Cradle to Cradle certified sign system](#).

PlanSign modular sign system is awarded the international product design prize "iF design award "

Design

This timeless, minimalistic design makes it ideal for any environment. The sign is flat and mounted 5 mm or 1/4 inch off the wall.



Choice of Material

The sign system is produced of 5 mm or 1/4 inch solid aluminum with a silver satin anodized finish that gives a unique, hard and resistant surface. Aluminum was chosen as material because of its strength and durability as well as its eco-friendly features and great capacity for recycling. The choice of material makes the system suitable for indoor as well as outdoor environments.

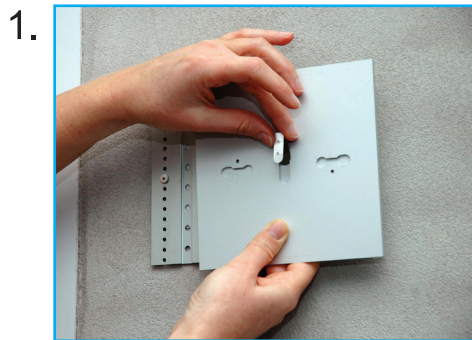
Lock System

All DanSign systems are mounted with the world patented magnetic locking device that make the signs theft proof and easy to replace and re-use. The magnetic lock system is simple. A hidden spring lock integrated in the sign locks the sign when it is mounted. The sign is released by use of the magnetic key. This makes it easy for any facility manager to move a sign to another position. It is therefore not necessary to manufacture a new sign.

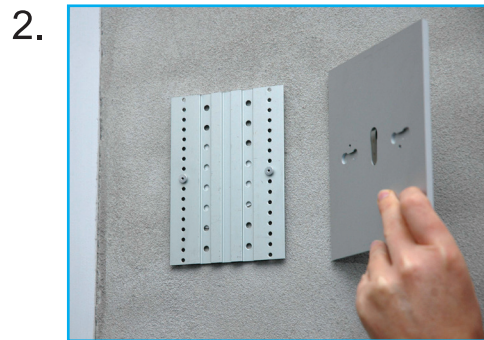
Mounting of Sign

To mount a sign is easy. It is mounted on the hidden bracket by custom-made aluminum rivets that mesh with the grooves on the back of the sign.

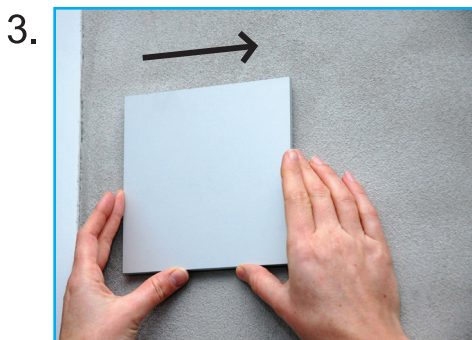
Switching signs from one position to another



Put spring lock into routed position on the back of the sign plate



Place key hole routings on top of rivets in the bracket

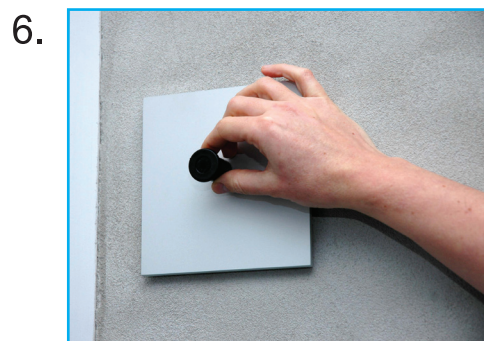


Slide sign plate a little to the side

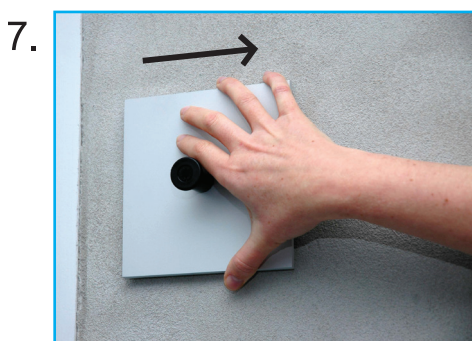


Sign plate and bracket click together and the sign is locked

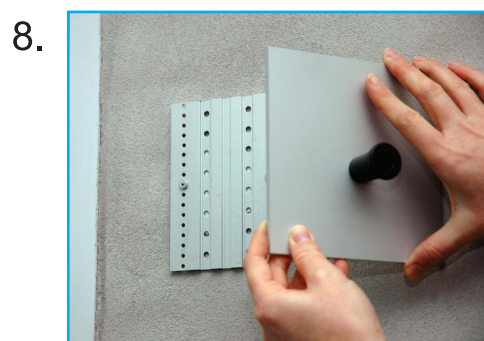
Dismantling single signs



Put magnetic key on the center of the sign plate



The spring lock is released and the sign plate can slide to the side



Slide off the sign plate