



inaka home

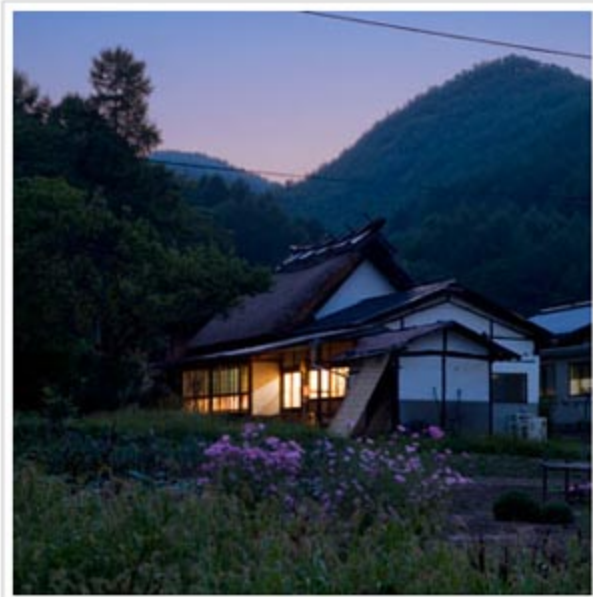
jp | de | en



Home About FAQ Our Homes Community/Contact Blog

Inakahome

Inakahome acquires old Japanese farm houses (Kominka) in the country side, and restore them in a way that retains the original character, while at the same time providing amenities for modern living. After initial development, Inaka Home KK operates these houses as holiday accommodation for city dwellers, who aspire to a more natural and peaceful lifestyle.



Arisaka house near Ueda opened

We are pleased to announce the completion of our first development project in Nagawa-machi, Ueda. After one year of loving renovation work, this house with over 100 Years of history is now available for rental.

For the moment please utilise the [feedback form](#) for inquiries or reservation.

Just about two hours from Tokyo, this house offers the perfect escape for the weekend, in natural rural surroundings. To learn more about the features of this house, please consult our special [product page](#) "Our Homes >> Ueda Arisaka"

Hülsta Sleep fair special campaign

The European top brand hülsta produces premium design furniture based on Bauhaus tradition exclusively in Germany. The company has been founded in 1940 in Stadlohn, Germany and offers a wide range of furniture comprising living, dining, bedroom, kids and home office.

hülsta has developed the world finest sleep technology based on urethane mattresses and wooden base frames. Using the adjuster function of the wooden base frame it is possible to provide the perfect sleeping surface for any body size and shape. hülsta has invested more than 40 years of research into sleep and orthopedics in collaboration with Kiel university in Germany. Healthy sleep is the source of your "Fresh Life, Every Day".

Inaka Home and hülsta have teamed up for the "Fresh Life, Every Day" campaign promoting healthy sleep. Visitors to the hülsta Tokyo showroom have the chance to win a week-end at Inaka Home and would be able to experience highest quality of sleep in the tranquillity of Nagano's beautiful country site.

A special discount for hülsta customers is also provided by Inaka Home.

Please refer directly to hülsta's web page:

www.hulsta.co.jp

hülsta
made in Germany

Living with Values

FRESH LIFE, EVERY DAY!

COME AND TRY IT OUT!
あなたに合った最高の眠りをカウンセリング



Company Values and Mission

1. Preserve Heritage and Culture

Old buildings are a valuable part of a Japan's culture and heritage. Our business tries to maintain this precious aspect of the house by targeted renovation, so that it continues to be a useable part of life, rather than just a dead museum piece.

2. Community Involvement

We see both our neighbours and our guests as part of our Inaka Home community, that must be strong and vital in order to flourish. We therefore involve the local community in our activities, and foster the dialogue between urban and rural dwellers. Because of this we try to locate our homes in the country side with working rural communities.

3. Sustainable Development

We are conscious of our environment in terms of ecology, esthetics and economy. Our home renovation can be seen as an Adaptive Reuse, and therefore prevents waste and resource intensive new construction projects. We utilise natural products and building materials, and try to lower our ecological footprint during building and use. The appearance of the renovated home must fit into its surroundings, and our business must be modestly profitable in order to sustain our activities.

4. Relaxation, Natural Life and Space

Stressful life in polluted urban environments is not only a health hazard, but also breaks the link between human and nature. Our homes address these issues by providing extensive space and stress-free environment in a natural surrounding. Our concept allows guests to take time out in order to follow their hobby, be creative, spend meaningful time with friends and family and enjoy living.



Management Team

We are proud to have a competent and diverse team to run the company, with nationalities covering three continents, and work experience in fields of Consulting, Accounting, IT and Architecture.

Board of Directors:



Patrick Niessen

(Representative Director & President)

has been working in the Japanese Finance Industry for 10 Years in the field of Controlling and Information Technology, and currently holds a management position at a foreign capitalised insurance company. Besides traveling over most of Europe, Patrick also walked the Scottish highlands, and in more recent times explored Asia, Polynesia as well as various parts of Japan. His other experiences include National Service as a Paratrooper, helping to build walls in rural Scotland and working on tourism related projects during his University time. While Inaka Home occupies most of his spare moments, he recently completed his MBA degree at Tsukuba University.



Peter Amor

(Director)

has over 15 years experience as a Finance and Information Technology professional. After graduating with a Bachelor of Economics degree from Sydney University Peter has held a number of positions as a management consultant designing and implementing custom IT solutions for finance divisions of Global 2000 companies. Peter started his professional life in his native city of Sydney before relocating to London, England where he worked throughout Europe for 4 years. Currently Peter resides in Tokyo, Japan where he leads the Japan and Asia Pacific Professional Services Division for a successful international software company. As an associate member of the Institute of Chartered Accountants Australia Peter is a certified accountant, and completed his MBA together with Patrick at Tsukuba University.



Tomohisa Miyauchi

(Director)

was born in Tokyo but studied and worked in the United States for an extended period. His achievements include a Bachelor of Architecture degree from the Southern California Institute of Architecture, as well as a Master degree from Harvard University. As an AIA architect, he runs his own Architecture practice in partnership, and is Senior Editor of a high class Architecture magazine.



Peter Opdahl

(Director)

is originally from Oregon. He graduated from Georgetown University in 1989 and later spent two years doing graduate research in political economics at Waseda University. In 2002, he received a Masters of International Management from the Thunderbird School of Global Management. Peter currently resides in Tokyo and works as president of the Japanese trading firm where he has worked for the past 17 years.



Frequently Asked Questions

Q: Are you a charity or a for-profit Company?

A: Inaka Home is a stock company and therefore must generate a profit for its share holders. However, we believe that we can build a sustainable business, that also generates benefits for society and its surrounding environment. For example, we renovate and operate old buildings that would otherwise be ripped down to make space for a new plastic houses. From a community perspective, our activity helps to vitalise the rural economy that often suffers from shrinking and aging population trends.

Q: Why should I stay at Inaka Home rather than in a Hotel or Ryokan?

A: Many hotels and especially Ryokan are of a very high quality in Japan. However, they have various disadvantages compared with our homes:

1. Often they charge per person rather than per room,
2. They include large but often somewhat standard meals
3. They are often not children/pet/family friendly
4. The rooms are small despite the high price
5. Many rules and formalities exist, and the guest's activities are constrained by hotel schedule (e.g. time for meal)

On the other hand, our homes have the following advantages:

1. We charge for the entire house irrespective of number of guests
2. You can spontaneously eat out, or use our well equipped kitchen to cook with local ingredients
3. Children and pets are welcome
4. You will have a large space of house and land
5. We provide everything you need to take a break (stereo, nice kitchen, bar-b-q)
6. You determine your own schedule

Q: If you modernise the interior, will you not destroy the character of the house?

A: Many "restoration" projects bring the house to its original condition. In that sense it may provide only basic comforts and feel more like a museum exhibit rather than a place for living. When we "renovate" we keep the structure, beams and posts of the original building, but mitigate some of the deficiencies of the old house: the cold in winter, smoky air and and poor hygiene. We use proper insulation and heating to improve the energy efficiency of the house and provide clean and welcoming toilet and bath facilities. Also in modern times, the way space inside a house is used has undergone change. In order to cater for today's generation, we therefore divide the house into sleeping and living spaces and furnish the rooms to support the respective uses.

Q: I would like to help your company, is there anything I can do?

A: Thank you so much! You can help in various ways:

1. Become a guest and stay in our homes.
2. Join the Inaka Home community, make suggestions, recommend us, and join volunteer activities
3. Help us find new houses, or let us manage your house
4. Help us finance new acquisitions and renovations
5. Become a sponsor or product partner



Arisaka House, Ueda

Your perfect country retreat - Live in a genuine kayabuki thatched peasant house, lovingly restored with modern amenities, just about two hours from Tokyo. Two private bedrooms comfortably accommodate four adults, with a spacious living / dining room and a well equipped kitchen, complemented by outdoor space that can be used for child play / barbecue.

Whether you seek simple escape from the hectic life in Tokyo, or if you dream about entertaining your dear friends or family in a special place, you will be able to realise your ambition at inakahome Arisaka House.

[Overview](#)[House & Exteriors](#)[Interior & Facilities](#)[Access & Location](#)[System and Pricing](#)

Facilities:

- Two private bed rooms with a queen sized Huelsta bed each
- Spectacular living / dining room
 - Five meter high ceiling
 - Natural mud walls
 - Huelsta Sofa set
 - Huelsta Dinner table seating six
 - Hifi system with ipod connector
- Modern toilet and bath facilities
 - Washlet
 - Wet cabin with shower/bath
- Well equipped kitchen
 - Kitchen island
 - Two sinks
 - Gas range with four cooking places
 - Coffee maker, Rice cooker, Toaster

Family and pet friendly

Children will cherish their stay at Inakahome just as much as adults, thanks to the many nature activities in Arisaka and surrounding area. Live your weekend without being worried about hassle at dinner meal times.

For many people, their pet is a fully fledged member of the family. We welcome your pet at inakahome so that you can enjoy a holiday together.

Non-Smoking only

Our house is made from wood and straw, so in the interest of fire prevention, we ask you not to smoke inside the house.



Arisaka House, Ueda

Your perfect country retreat - Live in a genuine kayabuki thatched peasant house, lovingly restored with modern amenities, just about two hours from Tokyo. Two private bedrooms comfortably accommodate four adults, with a spacious living / dining room and a well equipped kitchen, complemented by outdoor space that can be used for child play / barbecue.

Whether you seek simple escape from the hectic life in Tokyo, or if you dream about entertaining your dear friends or family in a special place, you will be able to realise your ambition at inakahome Arisaka House.

- Overview
- House & Exteriors**
- Interior & Facilities
- Access & Location
- System and Pricing

Stay in a house with more than 150 Years of history

Our house was registered 150 years ago, in the year 1 of Meiji. However, the building itself with its different construction parts and ancient beams attests to a much more advanced age.



Click photos to enlarge

Exquisite Rural settings

Lush forests and tranquil bambo groves form the backdrop to the village of Arisaka. The house commands a wonderful view over small, lovingly cared for fields, and the woods to the west, and yet remains attached to the village community.

Outside space for any occasion

If you just want to find a quite space to read a book, have a barbecue, or sit outside to enjoy the warming rays of the sun -we have plenty of outside space in front of the house.



Arisaka House, Ueda

Your perfect country retreat - Live in a genuine *kayabuki* thatched peasant house, lovingly restored with modern amenities, just about two hours from Tokyo. Two private bedrooms comfortably accommodate four adults, with a spacious living / dining room and a well equipped kitchen, complemented by outdoor space that can be used for *child play* / *barbecue*.

Whether you seek simple escape from the hectic life in Tokyo, or if you dream about entertaining your dear friends or family in a special place, you will be able to realize your ambition at *makahome Arisaka House*.

Overview House & Exterior Interior & Facilities Access & Location System and Pricing

100 sqm of Interior Space

Escape from the confines of your Tokyo apartment and enjoy 100sqm of stylish interior space. *makahome* combines elements of the traditional Japanese house like mud walls and carpentry with modern furniture, and art objects.

The living / dining area is a spectacular space under the *Shaw* roof, with a ceiling height of 5m. Sit down and relax with music, enjoying outstanding acoustics.

Explore Arisaka House by clicking the map:



Please click on this floor plan to see details of the room

Exclusive furniture by Hülsta

We have equipped the living/dining space and bed rooms with exclusive Hülsta furniture to guarantee highest comfort and high class design for our guests.

The European top brand *hülsta* produces premium design furniture based on Bauhaus tradition exclusively in Germany. The company has been founded in 1942 in Stadldehn, Germany and offers a wide range of furniture comprising living, dining, bedroom, kids and home office.

hülsta has developed the world finest sleep technology based on urethane mattresses and wooden base frames. Using the adjuster function of the wooden base frame it is possible to provide the perfect sleeping surface for any body size and shape. *hülsta* has invested more than 40 years of research into sleep and orthopedics in collaboration with *stl* university in Germany. Healthy sleep is the source of your "Fresh Life, Every Day".

Please also refer directly to Hülsta's website for more information: www.hulsta.de



Living / Dining

A large space, that opens up five meter high. Wooden beams and lovingly restored mud walls.

The fir side is decorated with paintings by up-and-coming artist *Yasu Matsuzaki*, and lighting object design by *Tomotaka Mawashi* of *stl*.

The Sofa, Dining Table set by *hülsta*.



Kitchen

Bright, modern kitchen with refreshing view over the fields.

Equipped with a four hob gas range, rice cooker, toaster, and espresso maker.

Wide range of pots, pans and utensils to satisfy any hobby cook.



Bed Rooms

Private bedrooms, cosy and comfortable

2x Queen sized beds / sleep systems by *hülsta*





Arisaka House, Ueda

Your perfect country retreat - Live in a genuine *kayabuki* thatched peasant house, lovingly restored with modern amenities, just about two hours from Tokyo. Two private bedrooms comfortably accommodate four adults, with a spacious living / dining room and a well equipped kitchen, complemented by outdoor space that can be used for child play / barbecue.

Whether you seek simple escape from the hectic life in Tokyo, or if you dream about entertaining your dear friends or family in a special place, you will be able to realise your ambition at inakohome Arisaka House.

Overview House & Exteriors Interior & Facilities Access & Location System and Pricing

Convenient Location and Access

Near Ueda, Nagano-ken

Please find a detail map for printing [here\(PDF\)](#)



Arisaka Village, Nagawa-machi

- Shinkansen:
 - from Tokyo (Asama) 94 minutes to Ueda Station (A)
 - Rental car from Ueda station (18km - 45 minutes)
- Own car:
 - Kanetsu expressway from Nerima (200km - 2 hours)
 - Exit at Tobu-Yonumaru IC (B)

Nearby facilities & attractions

- Walking Distance:
 - Hot Spring (Onsen)
 - Convenience Store
 - Origiri & Ooyaki shop
 - Tourist information
- Within 5 minutes driving:
 - Supermarket
 - Fresh Soba Restaurant
 - Japanese paper (wash) making
 - Petrol Station
- Further afield:
 - Skiing (25minutes)
 - Bessho Onsen (30 minutes)
 - Kakeyu Onsen (30 minutes)
 - Ueda Castle (45 minutes)





Arisaka House, Ueda

Your perfect country retreat - Live in a genuine kayabuki thatched peasant house, lovingly restored with modern amenities, just about two hours from Tokyo. Two private bedrooms comfortably accommodate four adults, with a spacious living / dining room and a well equipped kitchen, complemented by outdoor space that can be used for child play / barbecue.

Whether you seek simple escape from the hectic life in Tokyo, or if you dream about entertaining your dear friends or family in a special place, you will be able to realise your ambition at inakahome Arisaka House.

- Overview
- House & Exteriors
- Interior & Facilities
- Access & Location
- System and Pricing**

Rental and pricing system

We offer two type of rentals periods*1, Weekend and Work Week.

Our rental offer is designed to maximise your weekend holiday: we calculate the price for the entire weekend, on the basis of full days, rather than nights. In addition you can have an early checking the evening before, and a late checkout the morning after at no extra charge. This allows you to effectively stay 2 full days and 3 nights.

WorkWeek rental starts from Monday afternoon and ends on Friday noon, and is calculated on a similar basis, giving you 3 full days, 2 half days and 4 nights.

The price ranges typically from 50,000 to 100,000 Yen per house per block, depending on the season and other factors *2.

Important: For the moment please utilise the [feedback form](#) for inquiries or reservation, as our online booking system is not functional yet

Weekend Rental	Wed	Thu	Fri	Sat	Sun	Mon	Tue	Workweek Rental	Mon	Tue	Wed	Thu	Fri	Sat	Sun
early ~ 09:00h				■	■	■		early ~ 09:00h		■	■	■	■		
09:00h ~ 12:00h				■	■	■		09:00h ~ 12:00h		■	■	■	■		
12:00h ~ 15:00h				■	■	■		12:00h ~ 15:00h		■	■	■	■		
15:00h ~ 18:00h				■	■	■		15:00h ~ 18:00h	■	■	■	■	■		
18:00h ~ late				■	■	■		18:00h ~ late	■	■	■	■	■		

*1 - Blocks may not exactly coincide with the illustration. In case of long weekends or national holidays an extension or reduction in days is possible. Please refer to reservation system for individual quote for a specific booking block.

*2 - Price is subject to change without prior notice, please refer to reservation system for individual quote for a specific booking block.

ISSHO Architects

ISSHO is an architectural design office based in Tokyo, established in 2002, develops building, urban space, art and furniture. ISSHO collaborates with leading specialists in a variety of fields to bring innovation in environmental and spiritual design.

NEWS

* 2008
* 2007
* 2006

WORKS

* BUILDINGS
* INTERIORS
* ART / ENVIRONMENT
* PROJECTS

PRESS

* PUBLICATION
* WEBSITES
* TEXTS
* LECTURES

PROFILE

* COMPANY
* PARTNERS

CONTACT

* ADDRESS
* RECRUIT

WORKS

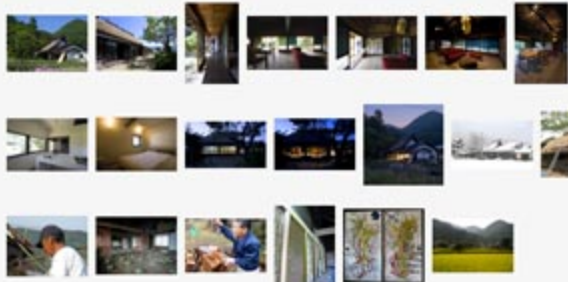
INAKA VILLA

ART / ENVIRONMENT . 2008

Painting by Ryo Matsuoka
Produced by INAKA HOME



Photographed by KOICHI TORIMURA



長野県上田近郊にある推定築200年の日本の地方に数少ない茅葺屋根の古民家を、ビラ型ホテルにコンバージョン・リノベーションしたプロジェクト。地元の材木・漆喰・土壁などの自然素材の利用、地元の数少ない茅葺職人と屋根改修を行い、日本の集落衰退に悩んだ村づくりや建築技術を継承利用しつつも、あえて新築・気密処理、構造補強等を行うなどの性能と機能を追加し、現代的な生活に適した建物と空間づくりを目指すことにより、更に200年持続すべく建築を考察した。

Renovation and conversion of a 200 year old farm house in Nagano into a villa-type hotel. We restored a traditional thatch peasant home while applying modern techniques to improve livability and functionality. Using only natural materials such as local woods, stucco and earth wall, and reconstructing the roof with the help of the only remaining thatching craftsman in the region, we have given the house another 200 years of life.

ART / ENVIRONMENT



INAKA VILLA

Painting by Ryo Matsuoka
Produced by INAKA HOME



ASIAN BODY / BTAP @798, Beijing

Participate with TCA(Shanghai)
Curated by Yosuke Hayano of MAO



SYNC BEIJING

Installation for Modern Style in EAST ASIA 2004 Exhibition

Collaboration with 000studio, frogvision, ASD
Produced by Shohei Matsukawa

株式会社ISSHO建築設計事務所/一級建築士事務所

153-0051 東京都目黒区上目黒3-41-10 Tel.03-5704-9101 Fax.03-5704-9102

This site is bilingual. This site is optimized for browser 3.0 and higher.
All images and materials posted on this site are copyrighted by ISSHO Architects.